



Elevate your vision

The graphics development engine for business and industry.
Build high-quality 3D solutions and deploy to any platform.



Powered by
**plain
concepts**



The potential of augmented and virtual realities means the need for new scenes and environments. Thanks to Evergine, these can be incorporated fast and for any platform old and new regardless of your different business requirements.

Evergine incorporates seamless integration with a variety of industry-centric files and functions giving you the tools you need to make the right decisions including BIM, CATIA, DICOM, STL, live video, 3D maps and more.

Evergine meets the demand of your project by constantly adapting to the market thanks to our multi-platform integration and predictive R&D giving you a solution that is backward compatible as well as futureproof.

Features



Multiplatform

OS X, Android (phone and tablet), iOS, Linux, and Windows (Microsoft devices)



No limits

Component based industrial engine, .Net, Online Docs and, Hands on Labs



Easy to Learn

3D Effects, Physics, PBR, Shadows, Postprocessing...



Totally free

Premium options available

Web experience, faster than ever



Compile only once, deploy anywhere

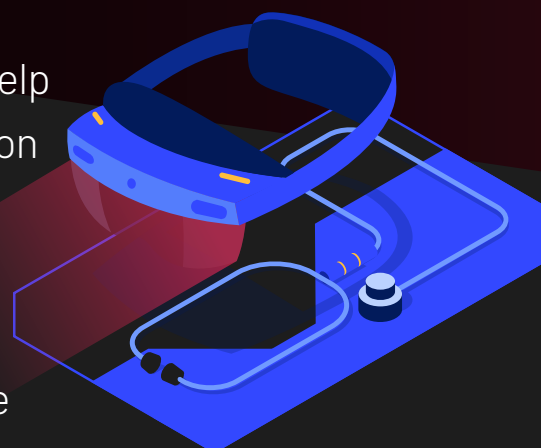


Your sectors. Your opportunities.

Virtual Reality & Augmented Reality solutions

Medicine and Health Care


The planning of operating rooms, help in patient diagnosis, superimposition of CT DICOM images onto a real-life patient, follow-up and support in the operating room, guided biopsy and medical training are all possible thanks to augmented and virtual realities.



Architecture

Combine reality with developments through realistic holographic interpretations. By integrating BIM systems, we can improve the control and intervention processes by overlaying blueprint data with the real world.

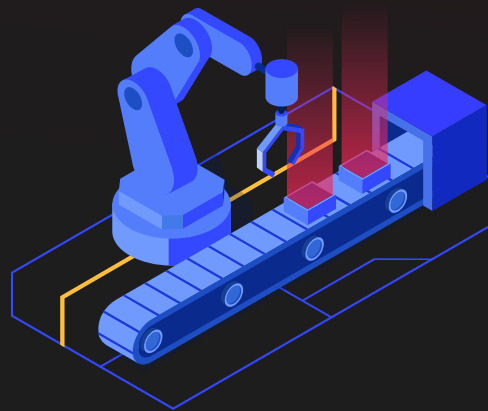


Check out Evergine's last updates 



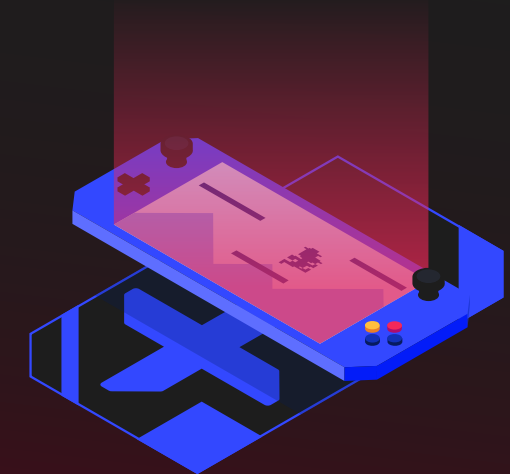
Industry, Maintenance and Remote Access

New control methods and system interactions allow the user to visualize and interact with factory data in a more natural and productive way, providing a unique tool in the maintenance process in production areas, or within the energy and telecommunications sectors.



Retail

With ARKit and ARCore, we can create holograms of a product from your catalog of assets for you to view within your own home or in a retail environment. We can also see how a particular item of clothing fits on a model or if a product matches your room. We have also developed our own HoloPlanner application, which allows you to virtually furnish a room or office with a virtual furniture catalog, as well as measure any distance.



Education and Training

Thanks to virtual and augmented realities we can create environments in which both the trainer and the students can simultaneously interact with virtual elements.

Evergine Pricing

~~\$ 2.000~~ month

\$ 1.500 month

Premium Support

We provide assistance and technical support for any questions or problems you may have.

[Contact us](#)

~~\$ 25.000~~ year

\$ 20.000 year

Source Code Access

We grant you total access to the source code of Wave Engine.

[Contact us](#)

Professional Services

You will have access to training sessions, one-to-one sessions, proof of concepts and new features according to your needs.

Custom pricing

[Contact us](#)

Special Launch Offer until March 11, 2022



Get the most interactive
experience for your business

Contact us!

info@evergine.com

evergine.com

Evergine is developed by Plain Concepts, a multi-award winning international software solutions company focused on the latest research and developments giving you access to the latest possibilities sooner, faster.

We have been a pioneer in providing innovative and engaging custom solutions since 2006 and we have extensive experience developing virtual and mixed reality solutions for the marketing, health, manufacturing and construction sectors.

Our customers:



BBVA

CBRE

 **Telefónica**

b+caraba

ALSTOM

